

DIP  
 1 Auto Card Preset (Default Off)  
 2 Buzzer Enabled (Default On)

Membrane LCD Contrast

LCD

Channel 2  
 RS232 Mode  
 Selector

Link to PSU PCB

Reader Connection #1

Programming  
 Input

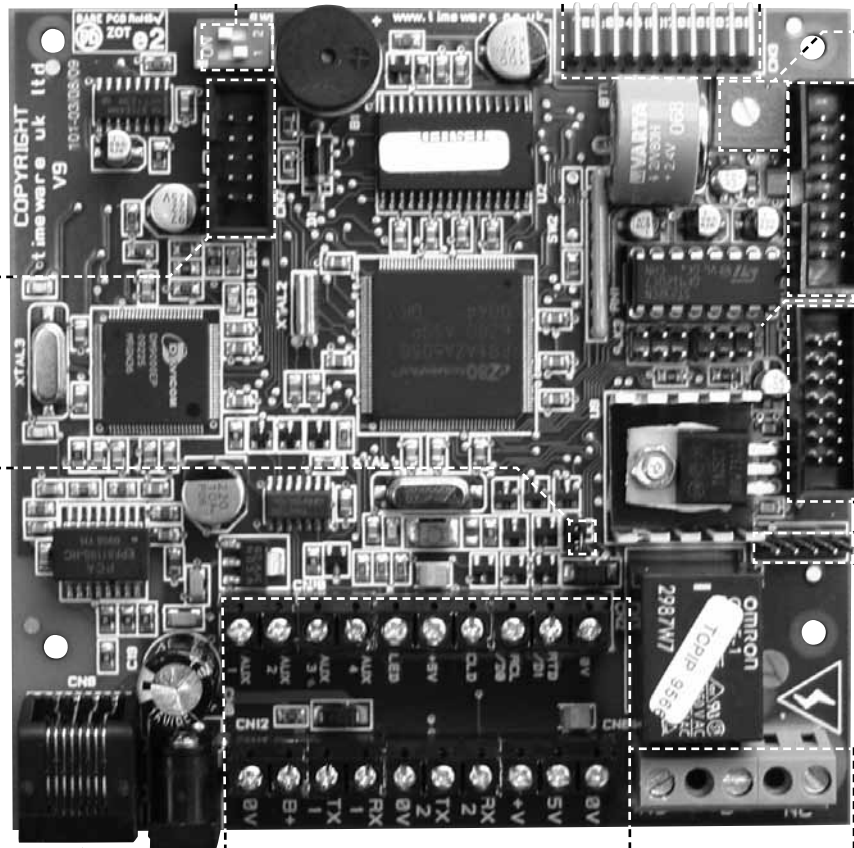
Jumper Enables  
 On Board Relay  
 (Default On)

Peripheral  
 Connections

Relay  
 Connections

Network  
 RJ 45 10/100

PSU Input  
 12V+ DC



Simon Birchall

Datasheet: v9/t/1001

25/11/09

Description: V9 issue 4 attendance PCB

www.timeware.org

0044 (0) 1706 659368