

Contents...

1. Introduction
2. Application overview
3. Installing the Microsoft desktop engine
4. Installing the software protection dongle
5. Installing the application on the Server
6. Creating the database using the application manager
7. Connecting to the terminals
8. Adding additional clients
9. Upgrading the application
10. Upgrading the terminal firmware
11. Installing a terminal script
12. Installing a new report

Introduction...

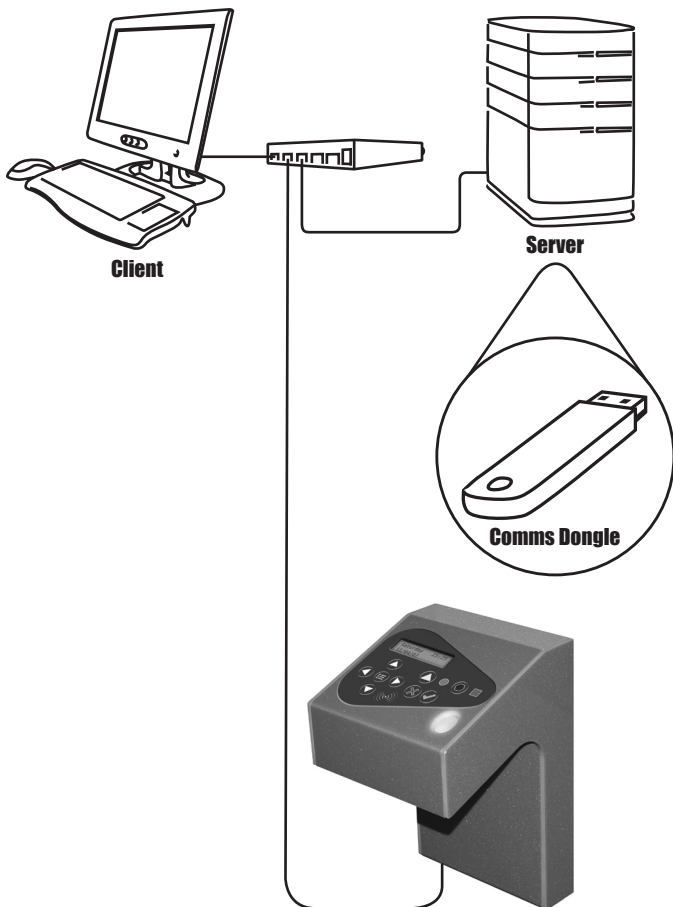
1

This guide has been designed to be used by certified timeware administrators.

If at any stage you require additional assistance, please do not hesitate to contact timeware support on +44 (0)1706 658 222 or +44 (0)7802 351000

Typical system overview...

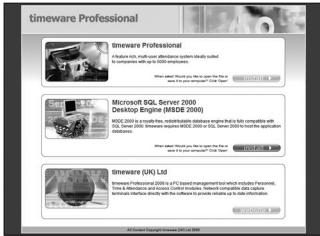
Typical System Install



Installing the Microsoft desktop engine...

3

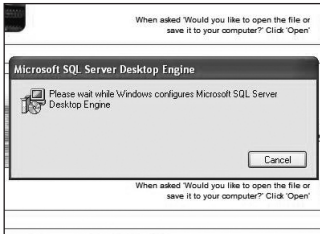
3.1 Insert the timeware CD and select 'Microsoft SQL Server 2000 Desktop Engine'



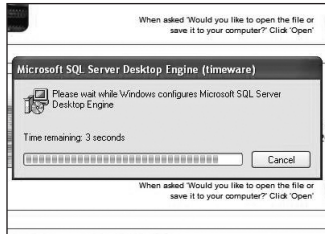
3.2 Select 'Run'



3.3 Please wait while Windows configures Microsoft Server Desktop Engine.



3.4 When prompted to restart your PC, please select 'Yes'



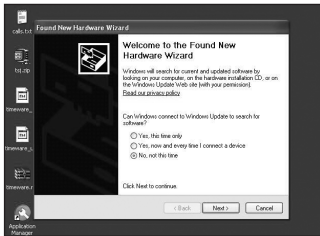
3.5 Once restarted, you should see the SQL icon in the system tray.



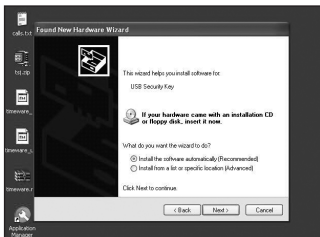
Installing the communication dongle...

- 4.1** Insert the timeware CD into the communications PC and then insert the communications dongle into a spare USB port on the same PC.

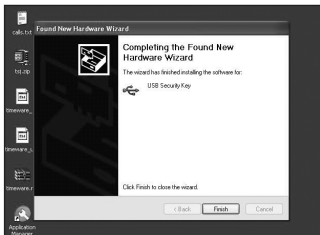
When the 'found new hardware wizard' appears, select 'No, not this time'



- 4.2** Next, select 'Install the software automatically'



- 4.3** Finally, when the following screen appears, please select 'Finish'

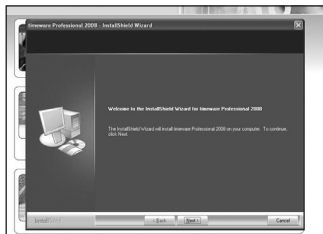


Installing the timeware software...

- 5.1** Insert the timeware CD into the communication PC and select 'timeware Professional'

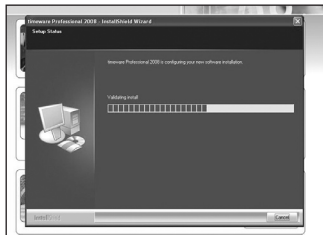


- 5.3** Please wait for the installer Wizard to load.



Follow all default options until arriving at the 'Typical Install' screen.

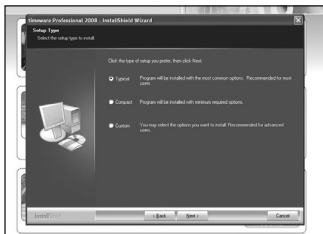
- 5.5** Please wait for installshield to complete.



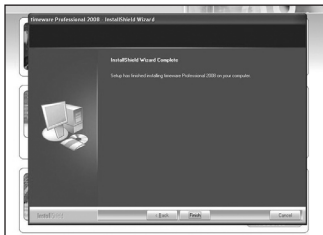
- 5.2** Select 'Run' on both security warning screens.



- 5.4** Select 'Typical'



- 5.6** Finally, once the Installation Wizard is complete, please select 'Finish'



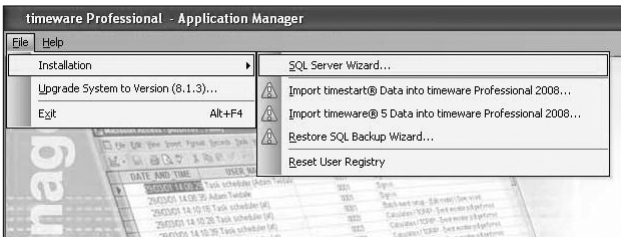
Creating the databases using the application manager...

6

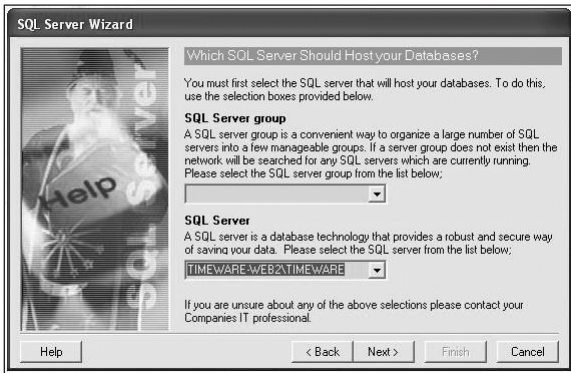
6.1 Click Start>Programs>timeware Software>Application Manager.



6.2 Next, select File>Installation>SQL Server Wizard



6.3 Simply follow the SQL Server Wizard...

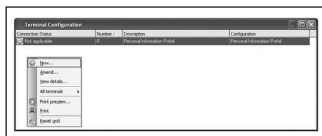


“tip! Always select the SQL Server whose name ends in \timeware”

Connecting to the hardware...



- 7.1 Double click the 'timeware Professional' icon on the desktop.
- 7.2 Once the 'Log In' form has loaded, click the 'Ok' button leaving the user name as 'Client' and the password blank.
- 7.3 Next, select Hardware>Terminal Configuration...
- 7.4 Once the 'Terminal Configuration' form has loaded, add a new terminal by moving your mouse pointer over the grid and perform a right mouse button click. Then from the context menu click 'New'.



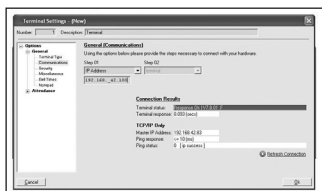
- 7.5 Once the 'Terminal Settings - New' form has loaded, enter a number and description that will help you identify the clocking terminal.

Next, click 'Communications' from the options tree and select 'IP Address' from the 'Step 01' dropdown list. Now enter the clocking terminal IP Address e.g. '192.168.42.80'.

To test the connection to the clocking terminal, click the 'Refresh Connection' link. If the connection was successful the terminal status should display 'Response OK'.

Click the 'Ok' button to save settings.

To add more clocking terminals repeat this step.



Adding additional clients...

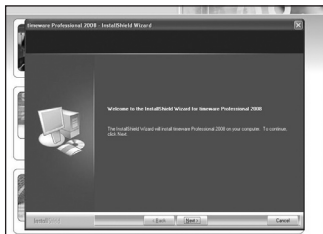
8.1 Insert the timeware CD into the client PC and select 'timeware Professional'



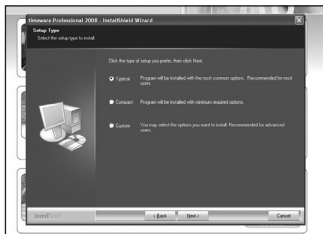
8.2 Select 'Run' on both security warning screens.



8.3 Please wait for the installer Wizard to load.

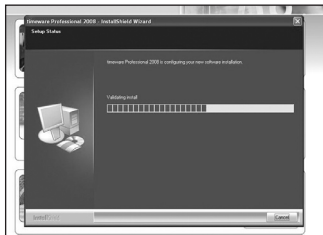


8.4 Select 'Typical'

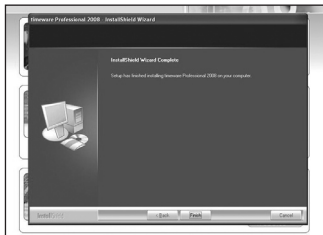


Follow all default options until arriving at the 'Typical Install' screen.

8.5 Please wait for installshield to complete.

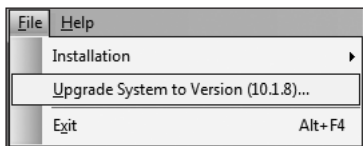


8.6 Finally, once the Installation Wizard is complete, please select 'Finish'

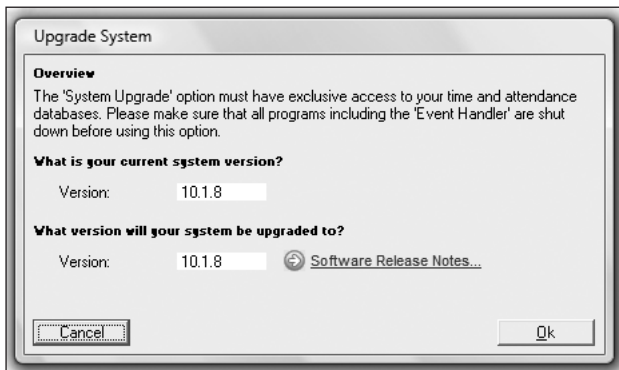


Upgrading the application...

- 9.1 Download the latest application version from <http://www.timeware.org/downloads.php>
- 9.2 Uninstall the current version from the Server
- 9.3 Install the upgrade, using the 'Typical install' option
- 9.4 When the install is complete run the Application manager and select 'File Upgrade System...'



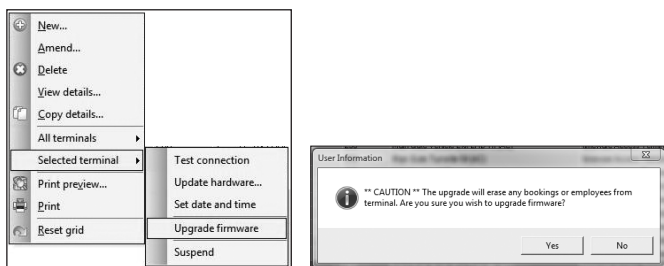
- 9.5 Observe the notes and click 'Ok'



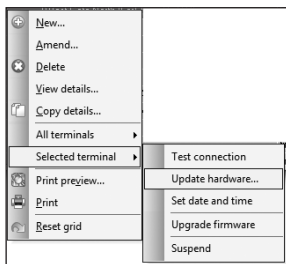
- 9.6 At this point, the database has upgraded to the latest version and only the server based application will be able to run. It is now your responsibility to uninstall each client and install the new version.

Upgrading the firmware...

- 10.1 Download the latest firmware from <http://www.timeware.org/downloads.php>
- 10.2 The firmware is held in a ZIP file. Open the ZIP file and save the firmware HEX file in a memorable location.
- 10.3 From within the application, select Hardware>Terminal Configuration...
- 10.4 Once the 'Terminal Configuration' form has loaded, select the terminal you wish to upgrade by performing a right mouse button click, then click 'Selected terminal', and finally 'Upgrade Firmware'



- 10.5 Next select the memorable firmware HEX file location to begin the upgrade process.
- 10.6 Finally, once the upgrade is complete you will need to run an 'Update hardware' on the selected terminal.



Installing a terminal script...

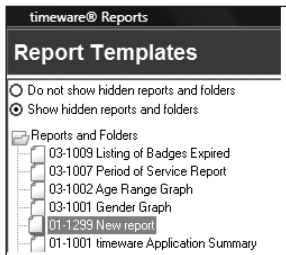
To be confirmed...

Installing a new report...

- 12.1** Select the required script from <http://www.timeware.org/reports.php> and save into the following folder:

C:\Program Files\timeware Software\timeware Professional 2010\TData\Report

- 12.2** The next time you log into the application the new report will appear on the left side of the report screen. Follow the usual method of dragging the report to the right of the screen and modifying its properties.



**For further information on the product range
please refer to...**

www.timeware.org